

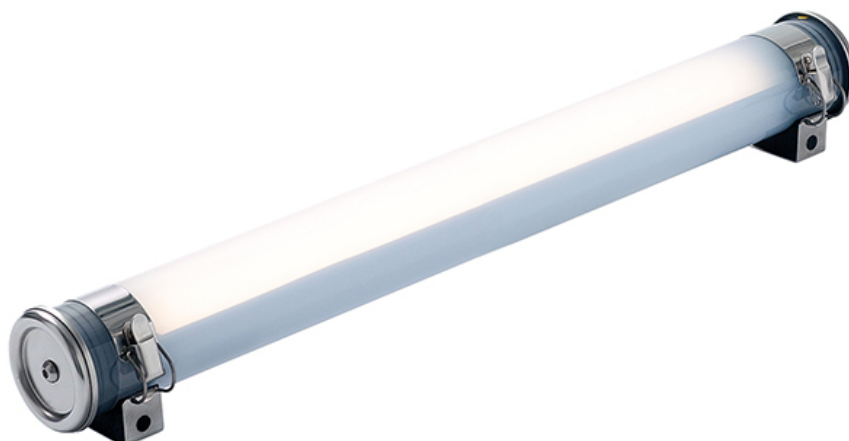
FOUCAULT 24V

ø70 compact tubular fitting for lighting for machines and processes in 24V DC



FOUCAULT 24V

ø70 compact tubular fitting for lighting for machines and processes in 24V DC



The FOUCAULT 24V makes the lighting of machinery easy, smart and scalable! It is perfect for providing great visibility in confined spaces. Its CRI80 LED light is at once powerful, uniform and glare-free. It is resistant to humidity, steam and vapours, dust, impacts, oils and lubricants. It can be fitted into any space thanks to the fixing straps that can be oriented through 360°, and can be installed very easily thanks to the quick-connect fasteners. A unique benefit of its design makes it 100% repairable and scalable without affecting its watertight characteristics!



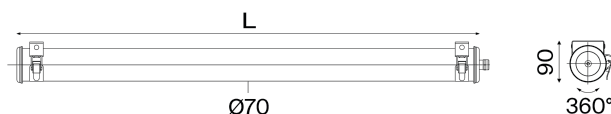


FOUCAULT 24V

Ø70 compact tubular fitting for lighting for machines and processes in 24V DC



Sammode



Top-up lighting versions

CRI 80, 4000K

Flux (lm)	L (mm)	Designation	Code	Watt
400	430	FOU70 24V 450 400-840 POME 113LN	34035315	3
600	575	FOU70 24V 575 600-840 POME 113LN	34035327	4
800	715	FOU70 24V 700 800-840 POME 113LN	34035316	6
1200	995	FOU70 24V 1000 1200-840 POME 113LN	34035309	8
1600	1275	FOU70 24V 1300 1600-840 POME 113LN	34035310	12

No risk of glare or a stroboscopic effect, in compliance with applications under EN 1837 "Safety of machinery - Integral lighting of machines"

Reinforced versions

CRI 80, 4000K

Flux (lm)	L (mm)	Designation	Code	Watt
800	430	FOU70 24V 450 800-840 POME 113LN	34035306	6
1200	575	FOU70 24V 575 1200-840 POME 113LN	34035307	8
1600	715	FOU70 24V 700 1600-840 POME 113LN	34035308	12

No risk of glare or a stroboscopic effect, in compliance with applications under EN 1837 "Safety of machinery - Integral lighting of machines"

Options

Materials	Disconnectable plugs	Color temperature	
Polycarbonate housing	PO	3000K	830
Coextruded polycarbonate/ PMMA housing with high chemical resistance	POME	4000K	840
End caps & fixing straps 304L stainless steel	-		
End caps & fixing straps 316L stainless steel	MR		
Fixing straps			
	IP68/69K quick-lock plug with threaded ring (capacity: Ø8 to 10 mm)	PS2	
	IP65 angular socket for screw locking (capacity: Ø6 to 13 mm)	PB2	
Fixing straps	-		
Fixing straps with HSHC screw	BAV		

Accessories

To be ordered separately



Magnetic fixings kit for 2 fixing
straps (320N per magnet) PU45080



Kits for APSAD compliance

2 x 20 cm 304L stainless steel extensions	PU44277
2 x 20 cm 316L stainless steel extensions	PU47378
2 x 5 cm 304L stainless steel extensions	PU44278
2 x 5 cm 316L stainless steel extensions	PU45880



1m HO7-RNF pre-wired cable 2x1,5²

Stripped free end	CAB0173
Wieland® plug IP68/IP69K	CAB0174
(capacity : Ø6-10mm)	
Wieland® plug and Y splitter for loop-in/out	CAB0175



FOUCAULT 24V

ø70 compact tubular fitting for lighting for machines and processes in 24V DC

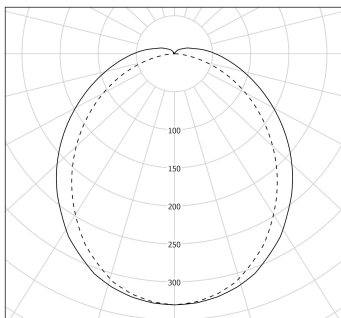


Sammode

Specification



Photometry



cd/klm
C0 - C180 - - - C90 - C270

Technical characteristics

Light source High-efficiency removable LED module (CRI>80, 3 SDCM)
50 000 h L80/B10 at max. operating temperature
Photobiological hazard : None (RG0)

Optics Special satin-finish housing for LED
Light mixing chamber

Heat management Aluminium heat sink

Control gear Constant current driver (non-dimmable)

Supply voltage 24V DC +/-10%

Electrical class Class III

Operating temperature -20°C to +40°C

Easy intallation and maintenance

Connection With nickel-coated brass cable gland for cable Ø 5-12 mm
To a 3 x 2,5 mm² disconnectable terminal block

Mounting 2 stainless steel fixing straps with spring clip and EPDM support pad, with variable center distance and 360° orientation

LED engine maintenance Easily removable LED modules and driver
Maintenance without tampering with the cable by removal of the end cap without cable entry
Closing by tightening the nut on the cable gland
Close'N Connect Patented system with automatic electrical connection/disconnection on closure

Materials

Housing Special polycarbonate housing protected by a coextruded PMMA layer

End caps and fixing straps 304L stainless steel

Gaskets Peroxide-cured EPDM

Method of construction One-piece housing with reinforced ingress protection by radial expansion of the seal

Standards

Waterproofness IP66, IP68, IP69K

Resistance to IK shocks IK10

Fire resistance 650°C

Vibration resistance Meets the severe application requirements of standard EN 60598-1 (tested according to IEC 60068-2-6)