

Sonos Beacon (AC)

A general purpose beacon. Features the TimeSaver base where connections are made to the base during the initial wiring phase which results in faster and more reliable installation. The beacon head 'twists and clicks' into the base on commissioning, avoiding the wiring and connection problems associated with traditional alarm devices.

The Sonos Beacon utilises a full faced, translucent case which provides a much larger lens area and a greater spread of light.

Sonos AC beacons are weatherproof to IP65 and can be used in all locations both indoors and outdoors.

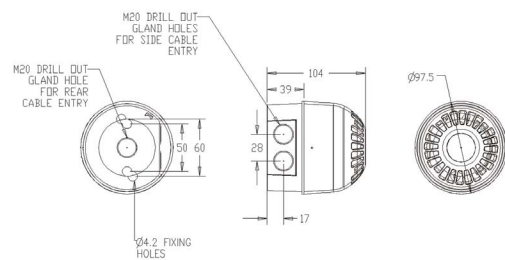
Features

- **Dual voltage 110V AC or 230V AC**
- **Easy installation**
- **Weatherproof to IP65**
- **Synchronised flash**
- **High output LED beacon**

Lens Colour Options



Applications - Safety, Industrial



Specifications

Part No.	Base	Colours	Voltage	Current
PSB-0206	White Deep Base	Red Lens	110/230V AC	55mA
PSB-0207	White Deep Base	Amber Lens	110/230V AC	55mA
PSB-0208	White Deep Base	Clear Lens	110/230V AC	55mA
PSB-0209	White Deep Base	Blue Lens	110/230V AC	55mA
PSB-0210	White Deep Base	Green Lens	110/230V AC	55mA
PSB-0211	Red Deep Base	Red Lens	110/230V AC	55mA
PSB-0212	Red Deep Base	Amber Lens	110/230V AC	55mA
PSB-0213	Red Deep Base	Clear Lens	110/230V AC	55mA
PSB-0214	Red Deep Base	Blue Lens	110/230V AC	55mA
PSB-0215	Red Deep Base	Green Lens	110/230V AC	55mA

IP Rating: IP65 **Operating Temp:** -25°C to +65°C **Weight:** 0.25Kg

Construction: Flame retardant Polycarbonate **Compliance:** EN60950

Cable Entries: 2x20mm cable gland

klaxon